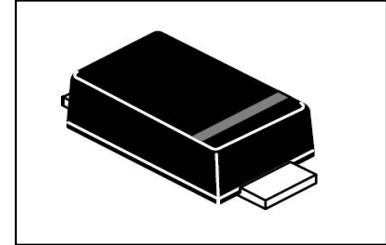


## Description

The open LED protector provides a switching electronic shunt path when an LED in an LED array fails as an open circuit. This ensures that the entire array of LEDs will continue to function even if a single LED in the array does not. This provides higher reliable lighting functions in applications such as headlights, aircrafts, aircraft runway lighting, Roadside warning lights, etc. This device is compatible with one, two and three watt LEDs that have a nominal 3V forward characteristic.



The PLED® is available in two surface mount packages, the DO-214, R-1 and the Quad Flat Pak No-lead (QFN). The QFN's low profile, chip scale package (CSP) is ideal for dense board applications.

SDO-123FL

## Electrical Characteristics (T<sub>amb</sub>=25°C)

Part Number	VDRM breakdown	IDRM	VBR breakdown	IS	VT	IT	I <sub>H</sub>	Critical rate of rise V/dt
	Min.	Max.	Max.	Max.	Max.	Max.	Min.	Max.
	V	uA	V	mA	V	A	mA	V
PLED06 A2	6	10	15	600	1.5	1	5	250V/μs

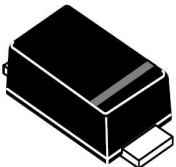
### General Notes:

- ◆ All measurements are made at an ambient temperature of 25°C. I<sub>pp</sub> applies to -40°C through +85°C temperature range.
- ◆ Special voltage (V<sub>BO</sub> and V<sub>DRM</sub>) and holding current (I<sub>H</sub>) requirements are available upon request.

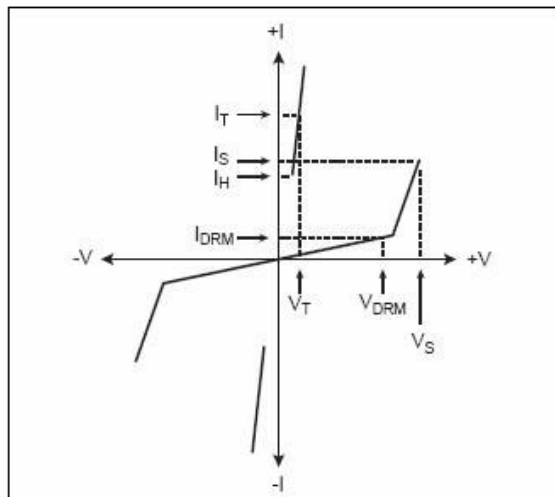
## Electrical Parameters (T<sub>amb</sub>=25°C)

Symbol	Parameter	Symbol	Parameter
V <sub>DRM</sub>	Stand-off voltage, is measured at I <sub>DRM</sub>	I <sub>H</sub>	Holding current
I <sub>DRM</sub>	Leakage current, is measured at V <sub>DRM</sub>	I <sub>T</sub>	ON-state current
V <sub>BR</sub>	Breakover voltage, is measured at 100V/μs	V <sub>T</sub>	On-state voltage
I <sub>S</sub>	Breakover current		

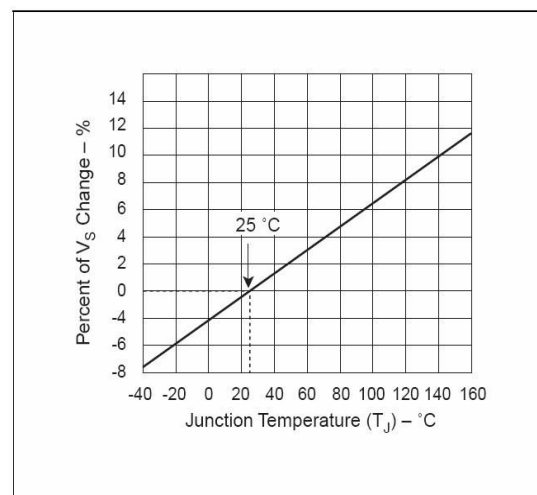
## Thermal Considerations

Package R-1	Symbol	Parameter	Value	Unit
	$T_J$	Operating Junction Temperature	-40 to +150	$^{\circ}\text{C}$
	$T_S$	Storage Temperature Range	-60 to +150	$^{\circ}\text{C}$
	$R_{\theta JA}$	Junction to Ambient on printed circuit	90	$^{\circ}\text{C/W}$

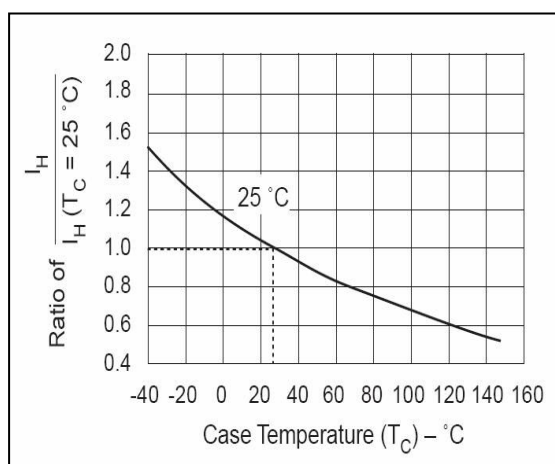
### Characteristics



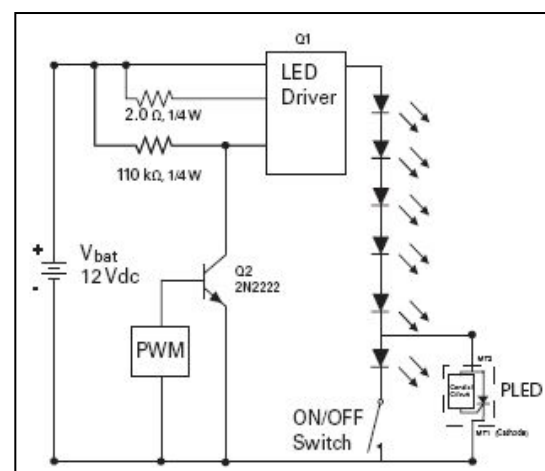
### $V_{BR}$ vs. Junction Temperature



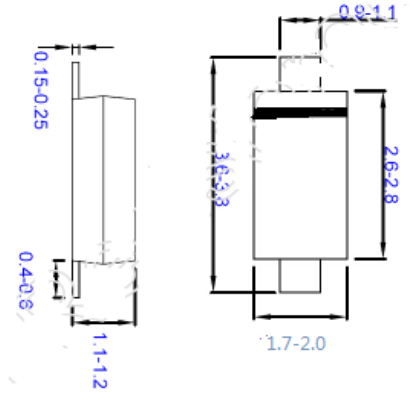
### Normalized DC Holding Current vs. Case Temperature

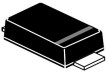


### LED Interference Test Circuit



## Product Dimensions



Package Type	Description	Packing Quantity	Industry Standard
SOD-123FL 	Embossed Carrier Reel Pack	3000PCS	EIA-481-D